

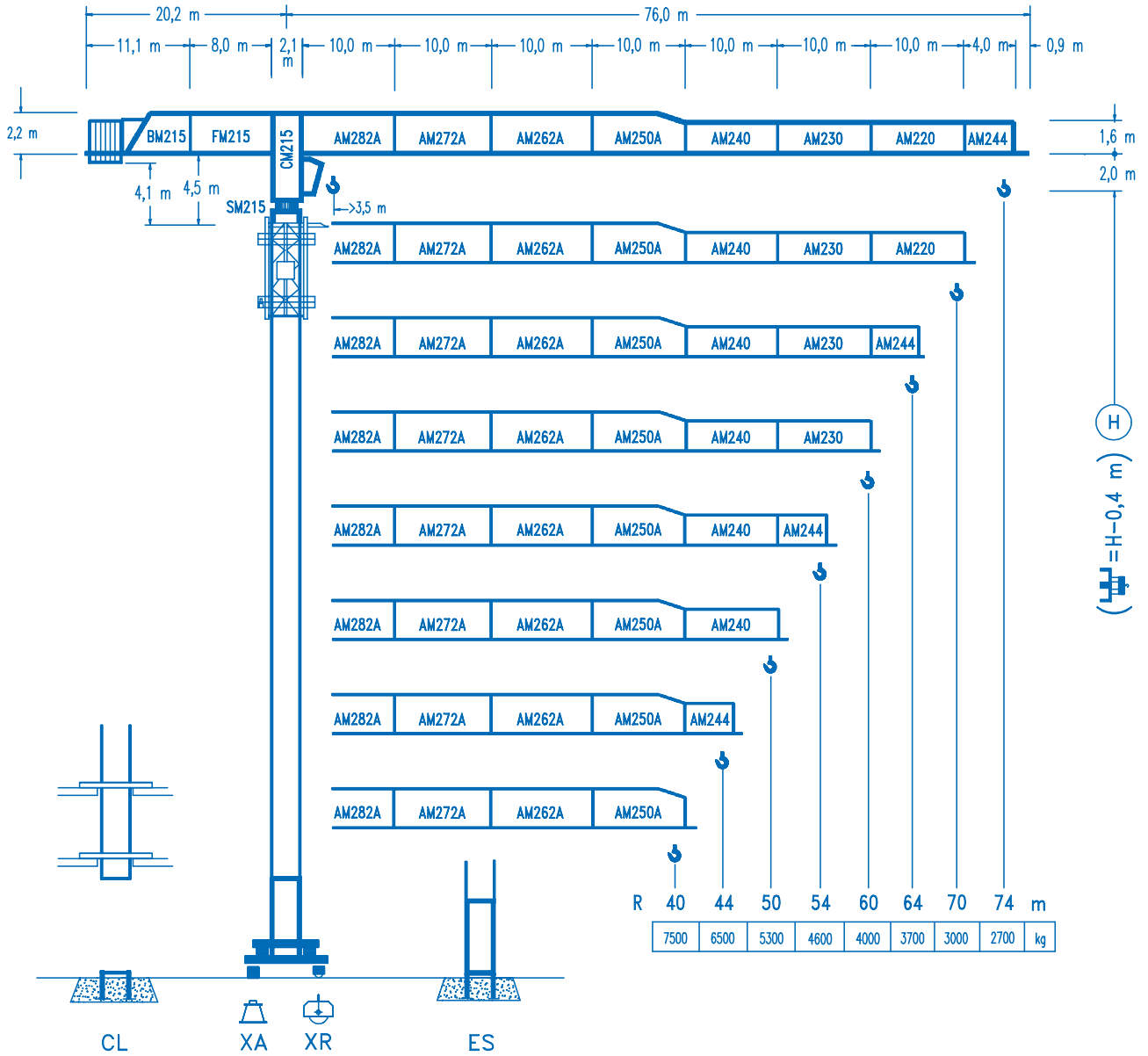


COMANSA

LINDEN 2100

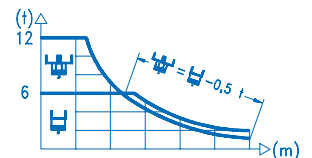
21 LC 290

12 t



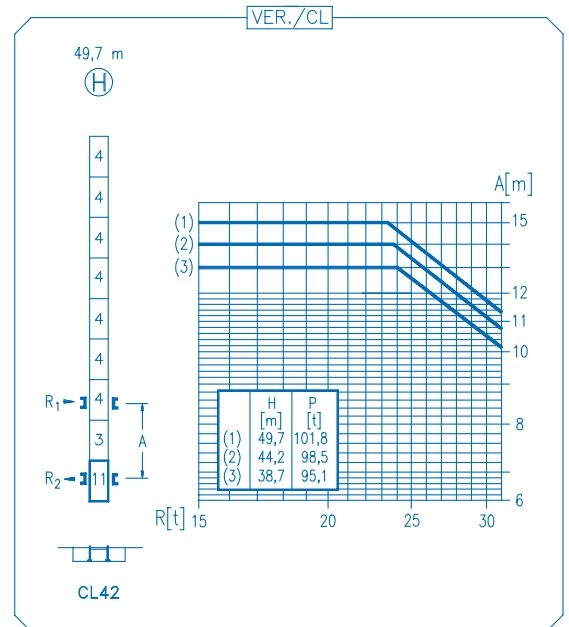
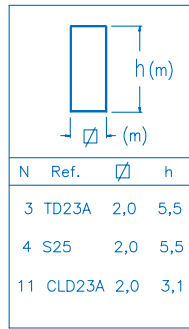
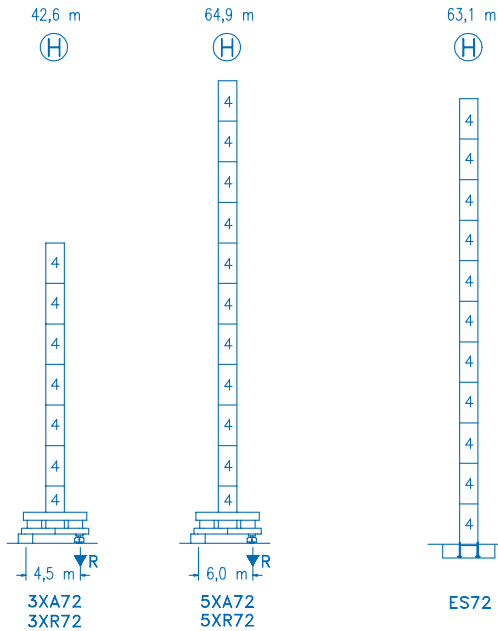
CE
DIN 15018 H1 B3

R	⌋				⌋									
R	20,2	25	30	35,9	37,3	40	44	50	54	60	64	70	74	m
74	12000	9345	7500	6000	6000	5545	4980	4300	3930	3475	3220	2890	2700	kg
70	12000	9610	7720	6000	6000	5745	5155	4455	4075	3605	3340	3000		kg
64	12000	10470	8430	7245	6000	6000	5685	4920	4505	3990	3700			kg
60	12000	10390	8370	7195	6000	6000	5695	4930	4515	4000				kg
54	12000	10500	8460	7275	6000	6000	5800	5020	4600					kg
50	12000	11005	8880	7645	6265	6000	6000	5300						kg
44	12000	10100	8715	7880	7170	6500								kg
40	12000	10345	8930	8075	7500									kg



DS.0346.27

09/05 Reserva de modificaciones.- Subject to modifications.- Modifications réservées.- Konstruktionsänderungen vorbehalten.



R. máx.	En servicio In operation En service In Betrieb	3XR72 105,9 t
		5XR72 113,6 t

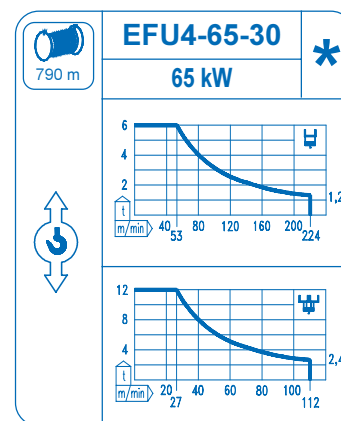
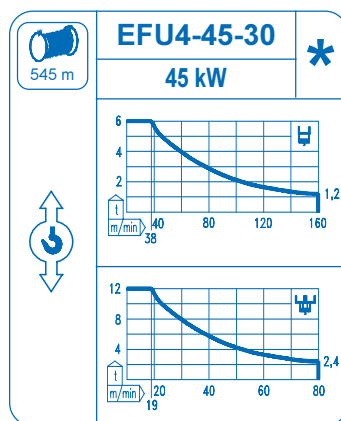
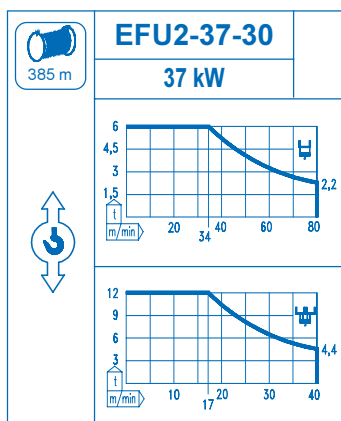
R. máx.	Fuera de servicio Out of service Hors service Ausser Betrieb	3XR72 90,3 t
		5XR72 150,3 t

CFU-7.5
7,5 kW
0 \varnothing 94 m/min

GR-12
3 x 120 Nm
0 \varnothing 0,7 rpm

TRA-7.5
2 x 75 Nm
0 \varnothing 20 m/min

TRA-7.5VC
2 x 75 Nm
0 \varnothing 20 m/min
5XR72



Tensión de alimentación Operating voltage Tension de service Betriebsspannung	400 V 3 ph 50 Hz
--	---

Opcional Optional En option Kauffoption	*
--	----------